

AGRICULTURAL MACHINERY
sitrex®
Spa

ASSEMBLY SPARE PARTS LIST

**Conversion kit RT/5200 3rd point hitch manual
fold into RT/5200 3rd point hitch hydraulic fold
part no 230.197**

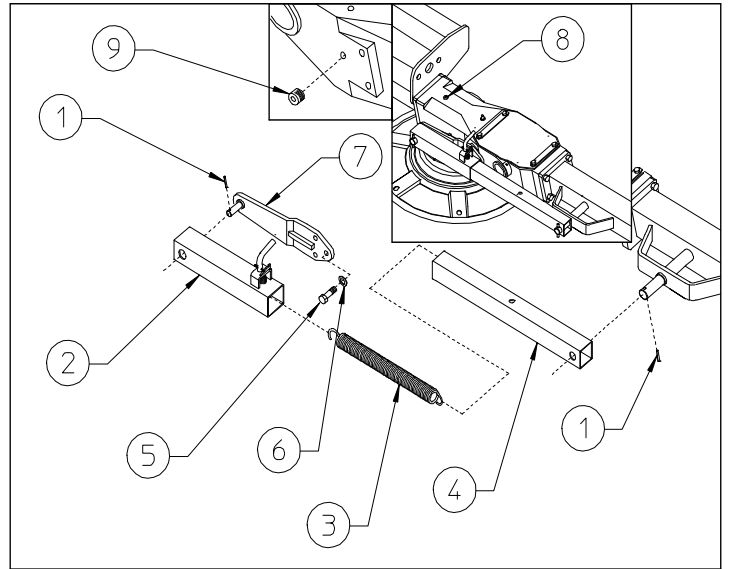
**Conversion kit RT/5200 3rd pull type manual
fold into RT/5200 3rd pull type hydraulic fold
part no 230.066**

Conversion kit RT/5200 3rd point hitch manual fold into RT/5200 3rd point hitch hydraulic fold

STEP "A"

First of all remove items 1-2-3-4-5-6 on both sides.
Protect holes where you removed screws 5 with plugs 9.

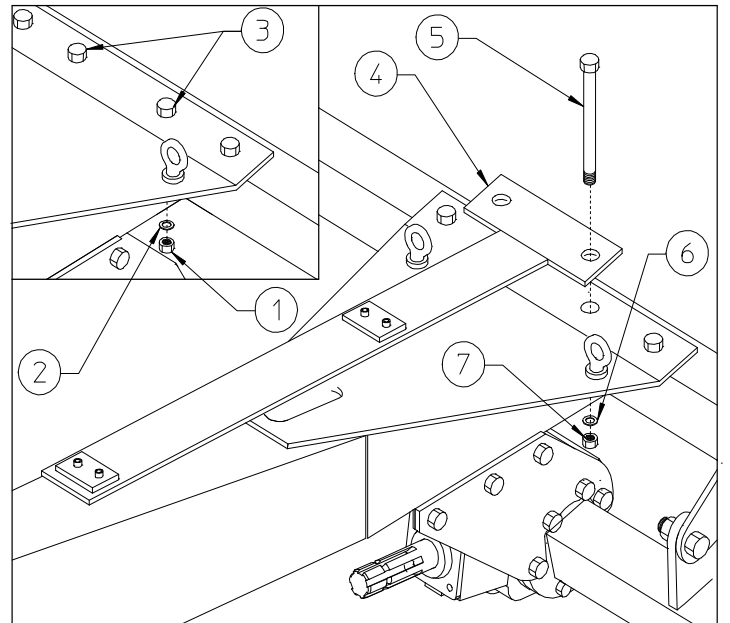
In this step, you will use:
Item 9 : 6 Plugs for M12



STEP "B"

Remove the two center nuts 1, the two washers 2 and the two screws 3.
Fit support 4 and secure with screws 5, washers 6 and nuts 7.

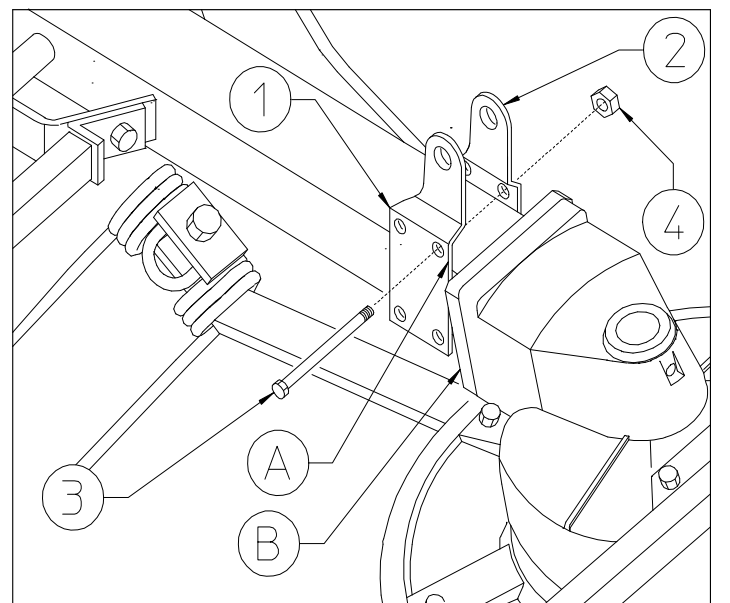
Item 5: 2 screws M12x90 (0.47"x3.55")
Item 6: 2 flat washers ø13 (0.51")
Item 7: 2 nut M12 (0.51")



STEP "C"

Fit supports 1-2 on both sides of the machine, using screws 3 and nuts 4.
Place the "A" side of supports 1-2 so that they touch the head of screws which are on flange "B".

Item 3: 2 screws M12x100-110 (0.47" x 3.94"- 4.33")
Item 4: 2 nut M12 (0.51")



STEP "C"

Attach the supports 1 (RH and LH side) using washers 3-6, screws 2-5 and nuts 4. Attach the cylinders 8-9 (H-LH) using washers 7, pins 10 and spring pins 11.

In this step, you will use:

Item 2: 4 screws M12x35 (0.47"x1.38")

Item 3: 6 flat washers ϕ 13 (0.51")

Item 4: 4 nut M12 (0.51")

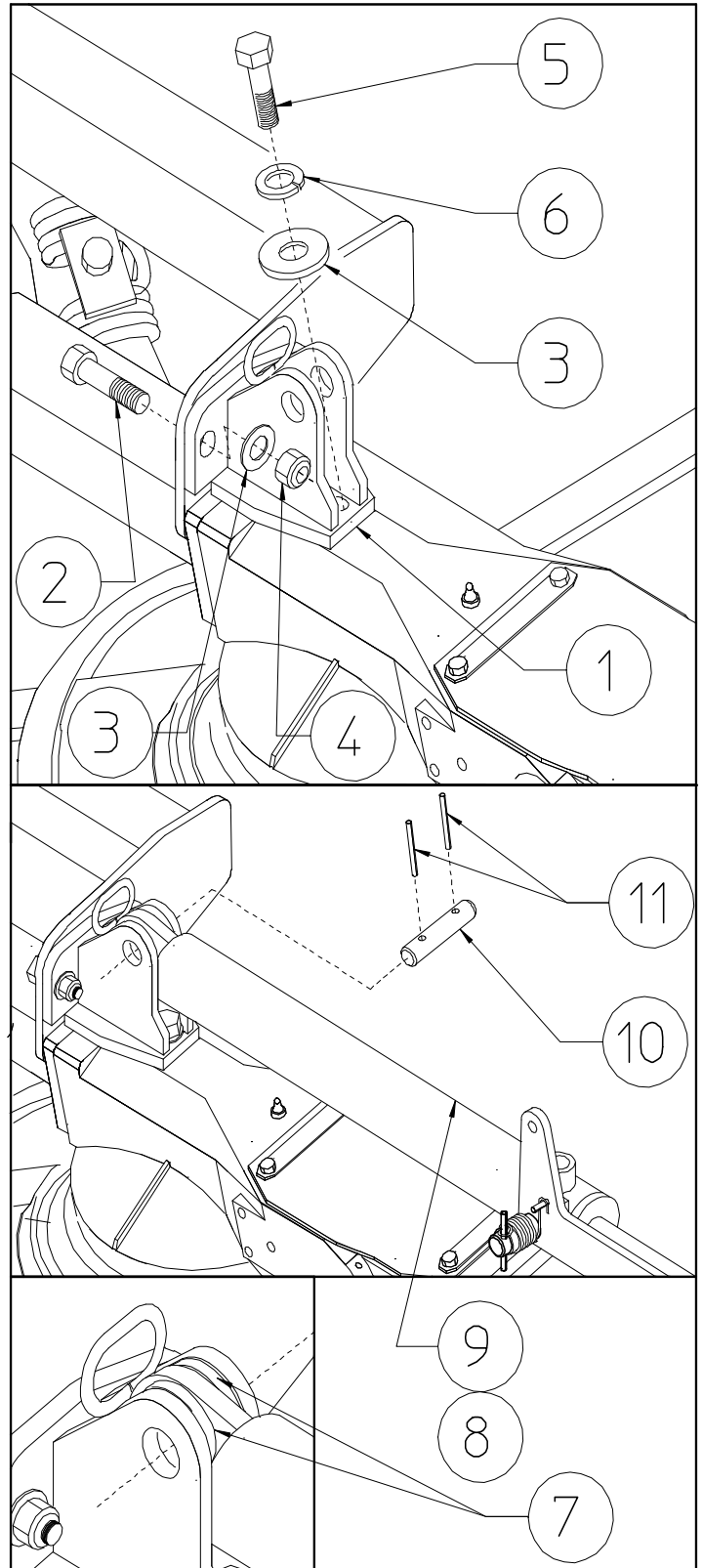
Item 5: 2 screws M12x25 (0.47"x1")

Item 6: 2 spring washers ϕ 13 (0.51")

Item 7: 4 washers ϕ 20-40x6 (ϕ 0.81"-1.57" x 0.24")

Item 10: 2 pins ϕ 20x70 (0.79"x2.76")

Item 11: 4 spring pins ϕ 6x35 (0.24"x1.38")



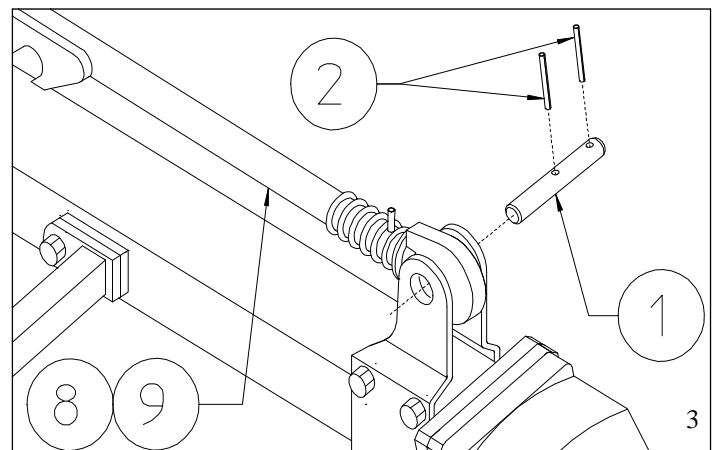
STEP "D"

Continue to secure cylinders 8-9 (RH-LH) using pins 1 and spring pins 2.

In this step, you will use:

Item 1 : 2 pins ϕ 20x95 (0.79"x3.74")

Item 2 : 4 spring pins ϕ 6x35 (0.24"x1.38")



STEP "E"

Pass rope 6 trough loops 7 (RH and LH side). Pass hoses 2 and rope 6 trough loops 8 on cylinder supports (RH and LH side). Attach the eye hose 2 to hole 1 (RH and LH side) using washers 3 and fitting 4.

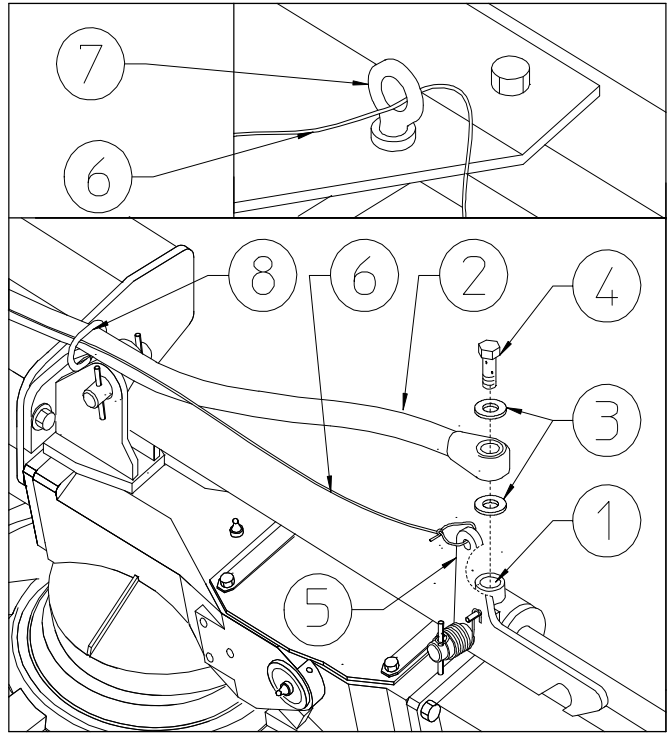
Fasten rope 6 to lever 5. (RH and LH side)

In this step, you will use:

Item 2 : 2 hoses 1/4"x1040 (1/4"x41")

Item 3 : 4 copper washers 3/8"

Item 4 : 2 fittings 3/8"



STEP "F"

Join hoses 2 to connector 1.

Attach nipple 3 to connector 1.

Attach hose 4 to nipple 3.

Secure hose 4 with collars 5 and screws 6.

In this step, you will use:

Item 1 : 1 "T" connector 1/4"

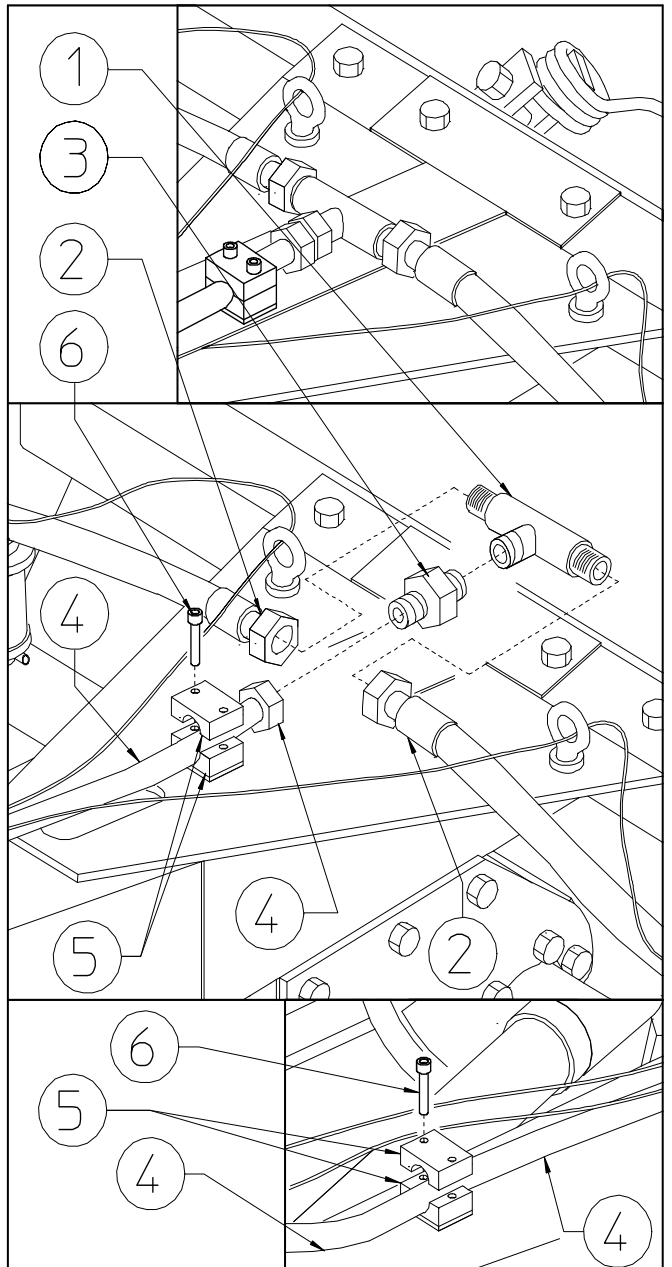
Item 2 : 2 hoses (step C-D)

Item 3 : 1 nipple 1/4" - 3/8"

Item 4 : 1 hose 3/8"x2200 (3/8"x87")

Item 5 : 4 hose collars $\varnothing 18$ ($\varnothing 0.71$ ")

Item 6 : 4 screws M6x25 (0.24"x1")



STEP “G”

Apply the support 1 to the 3rd point hitch 2 by means of the washer 3 and the screw 4.

Rest the hose and the rope 6 on the support 1.

Apply the copper washer 7 and the rapid coupling 8 to the hose 5.

In this step, you will use:

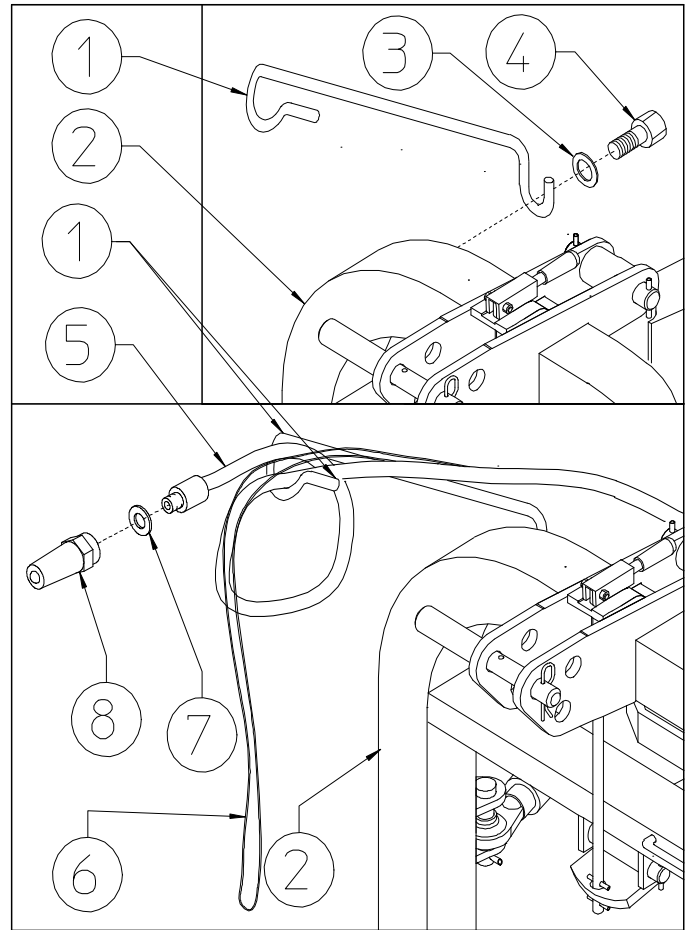
Item 3 : 1 washer $\varnothing 11-30 \times 2.5$
($\varnothing 0.43-1.18'' \times 0.1''$)

Item 4 : 1 screw M10x25 (0.39''x1'')

Item 5 : 1 hose (see item 4 on step “E”)

Item 7 : 1 copper washer 1/2''

Item 8 : 1 rapid coupling 1/2''



Conversion kit RT/5200 3rd pull type manual fold into RT/5200 3rd pull type hydraulic fold

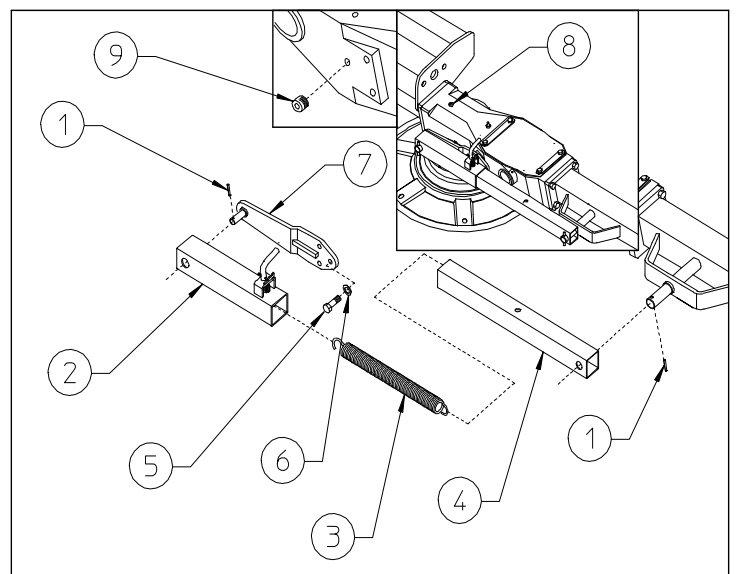
STEP “A”

First of all remove items 1-2-3-4-5-6 on both sides.

Protect holes where you removed screws 5 with plugs 9.

In this step, you will use:

Item 9 : 6 Plugs for M12

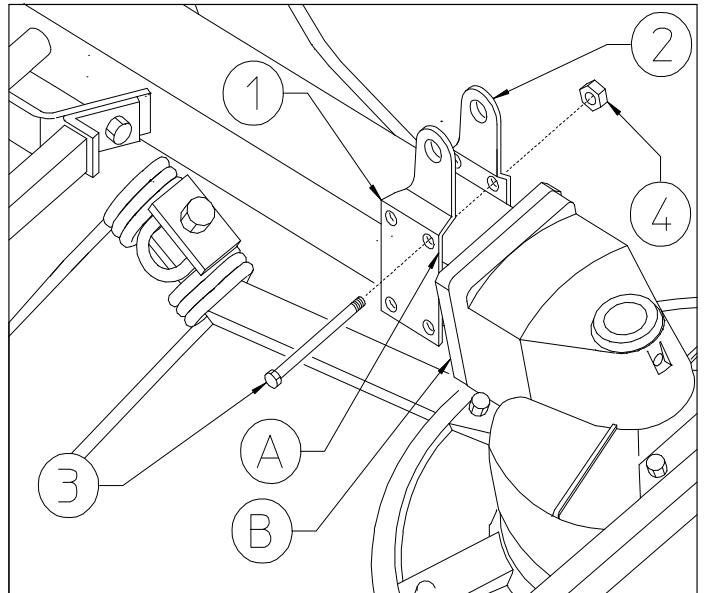


STEP "B"

Fit supports 1-2 on both sides of the machine, using screws 3 and nuts 4. Place the "A" side of supports 1-2 so that they touch the head of screws which are on flange "B".

Item 3: 2 screws M12x100-110 (0.47" x 3.94"- 4.33")

Item 4: 2 nut M12 (0.51")



STEP "C"

Attach the supports 1 (RH and LH side) using washers 3-6, screws 2-5 and nuts 4. Attach the cylinders 8-9 (H-LH) using washers 7, pins 10 and spring pins 11.

In this step, you will use:

Item 2: 4 screws M12x35 (0.47"x1.38")

Item 3: 6 flat washers ϕ 13 (0.51")

Item 4: 4 nut M12 (0.51")

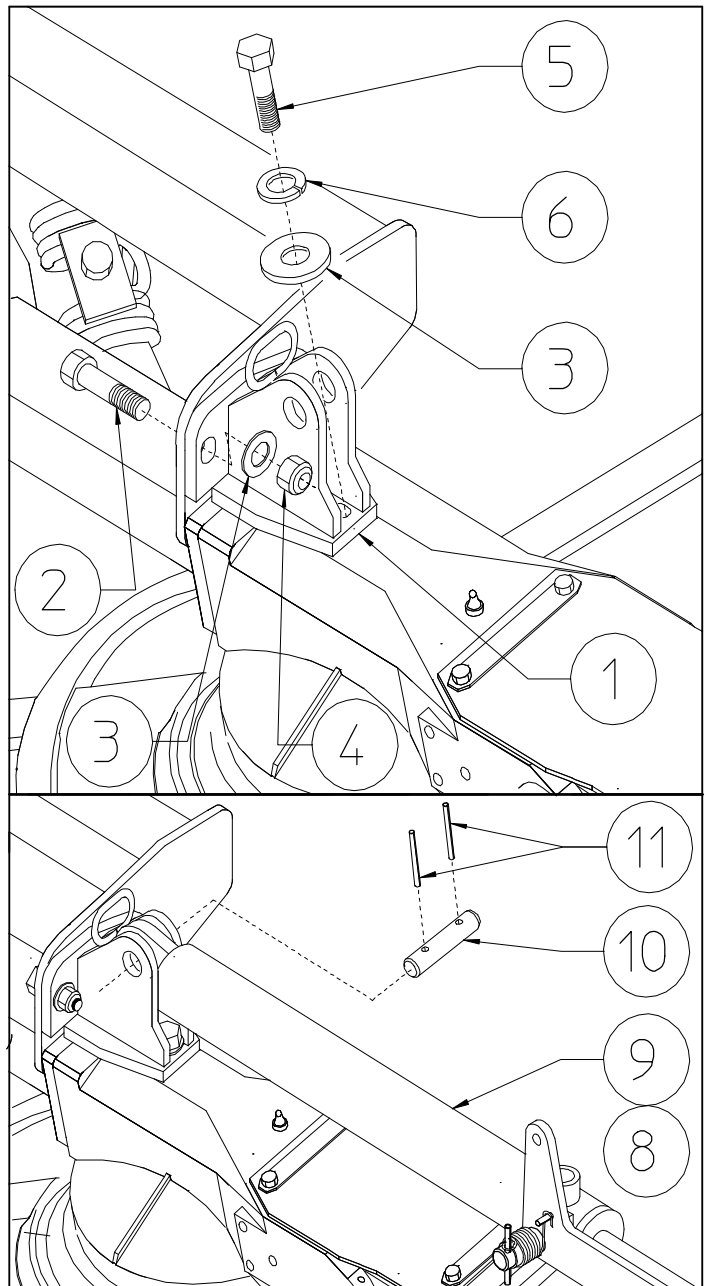
Item 5: 2 screws M12x25 (0.47"x1")

Item 6: 2 spring washers ϕ 13 (0.51")

Item 7: 4 washers ϕ 20-40x6 (ϕ 0.81"-1.57" x 0.24")

Item 10: 2 pins ϕ 20x70 (0.79"x2.76")

Item 11: 4 spring pins ϕ 6x35 (0.24"x1.38")



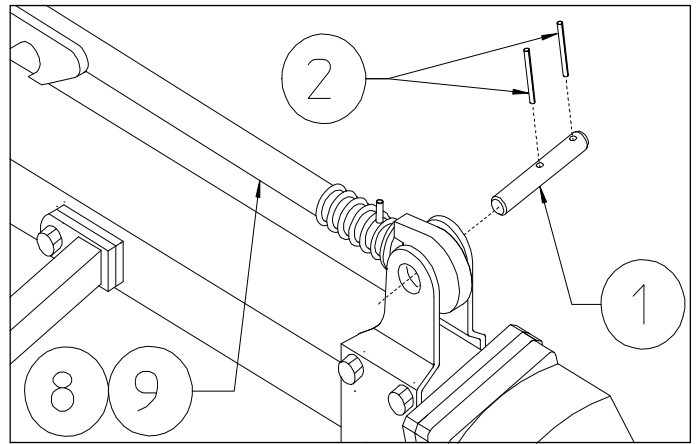
STEP “D”

Continue to secure cylinders 8-9 (RH-LH) using pins 1 and spring pins 2.

In this step, you will use:

Item 1 : 2 pins $\phi 20 \times 95$ (0.79”x3.74”)

Item 2 : 4 spring pins $\phi 6 \times 35$
(0.24”x1.38”)



STEP “E”

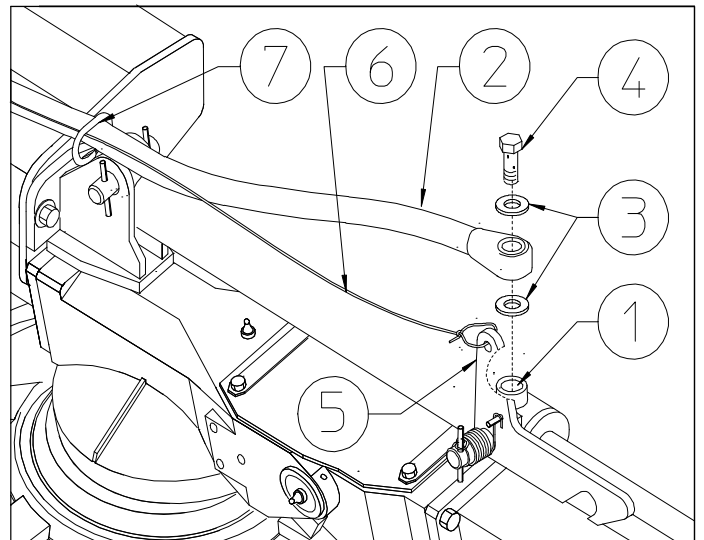
Pass hoses 2 and rope 6 trough loops 7 on cylinder supports (RH and LH side). Attach the eye hose 2 to hole 1 (RH and LH side) using washers 3 and fitting 4. Fasten rope 6 to lever 5. (RH and LH side)

In this step, you will use:

Item 2 : 2 hoses 1/4”x1020 (1/4”x40”)

Item 3 : 4 copper washers 3/8”

Item 4 : 2 fittings 3/8”



STEP “F”

Attach the support 1 to drawbar 3 using screws 4 and nuts 5. Join hoses 2 to connector 6. Attach nipple 7 to connector 6. Attach hose 8 to nipple 7. Secure hose 8 with collars 9 and screws 10. Pass rope 11 trough loop 12 on support 1.

In this step, you will use:

Item 2 : 2 hoses (step C-D)

Item 4 : 2 screws M6x16 (0.24”x0.63”)

Item 5 : 2 nut M6 (0.24”)

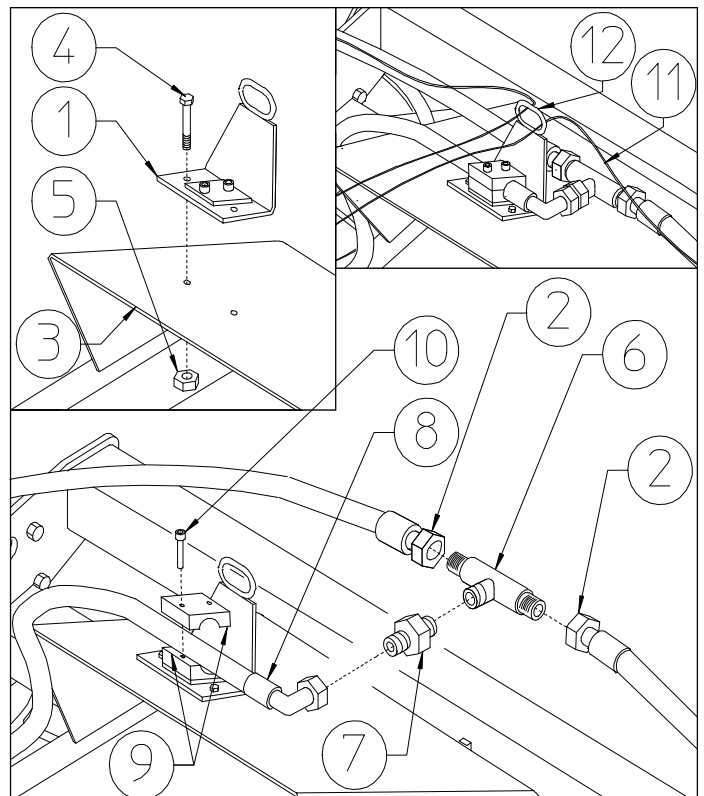
Item 6 : 1 “T” connector 1/4”

Item 7 : 1 nipple 1/4” - 3/8”

Item 8 : 1 hose 3/8”x2900 (3/8”x114”)

Item 9 : 2 hose collars $\phi 18$ ($\phi 45/64$ ”)

Item 10: 2 screws M6x25 (0.24”x1”)

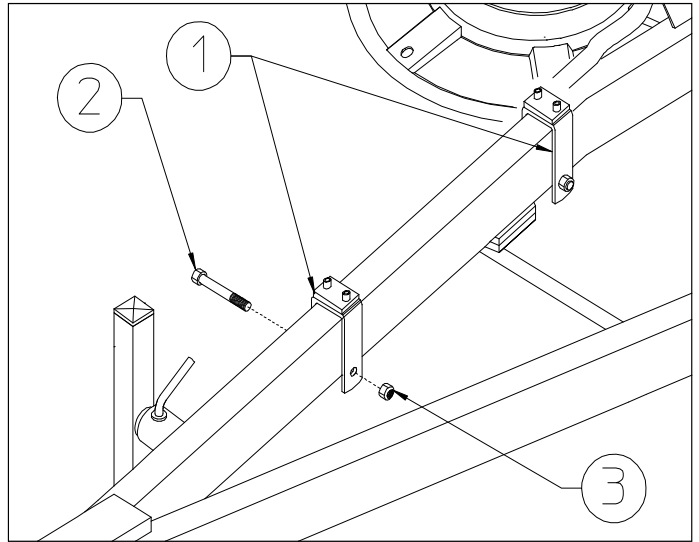


STEP "G"

Fit the hose supports 1 on drawbar and lock with screws 2 and nuts 3.

Item 2: 2 screws M10x65 (0.39"x2.56")

Item 3: 2 nuts M10 (0.39")



STEP "H"

Continue to secure hose 8 using collars 1 and screws 2. Attach the rapid coupling 4 and washer 3 to hose 8.

In this step, you will use:

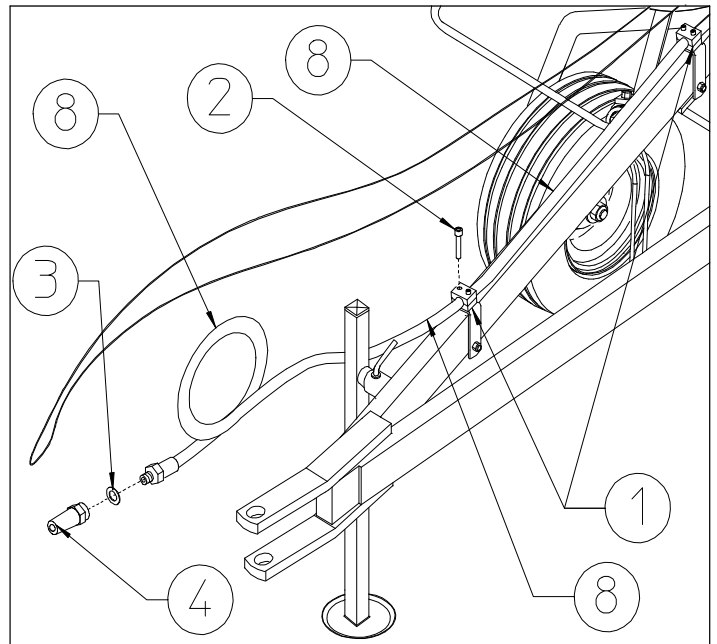
Item 1 : 4 hose collars $\varnothing 18$ ($\varnothing 45/64$ ")

Item 2 : 4 screws M6x25 (0.24"x1")

Item 3 : 1 copper washer 1/2"

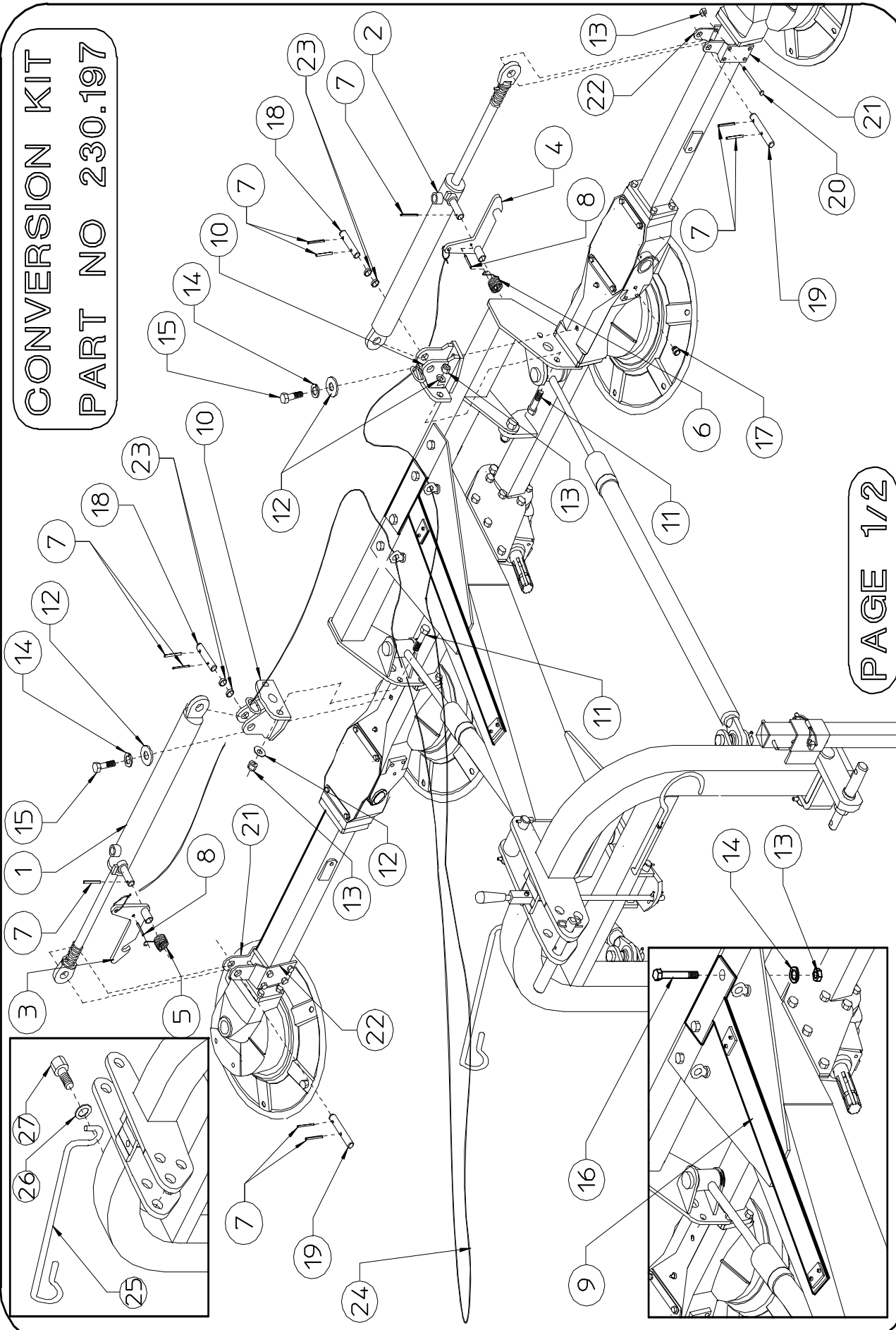
Item 4 : 1 rapid coupling 1/2"

Item 8 : hose (step E)



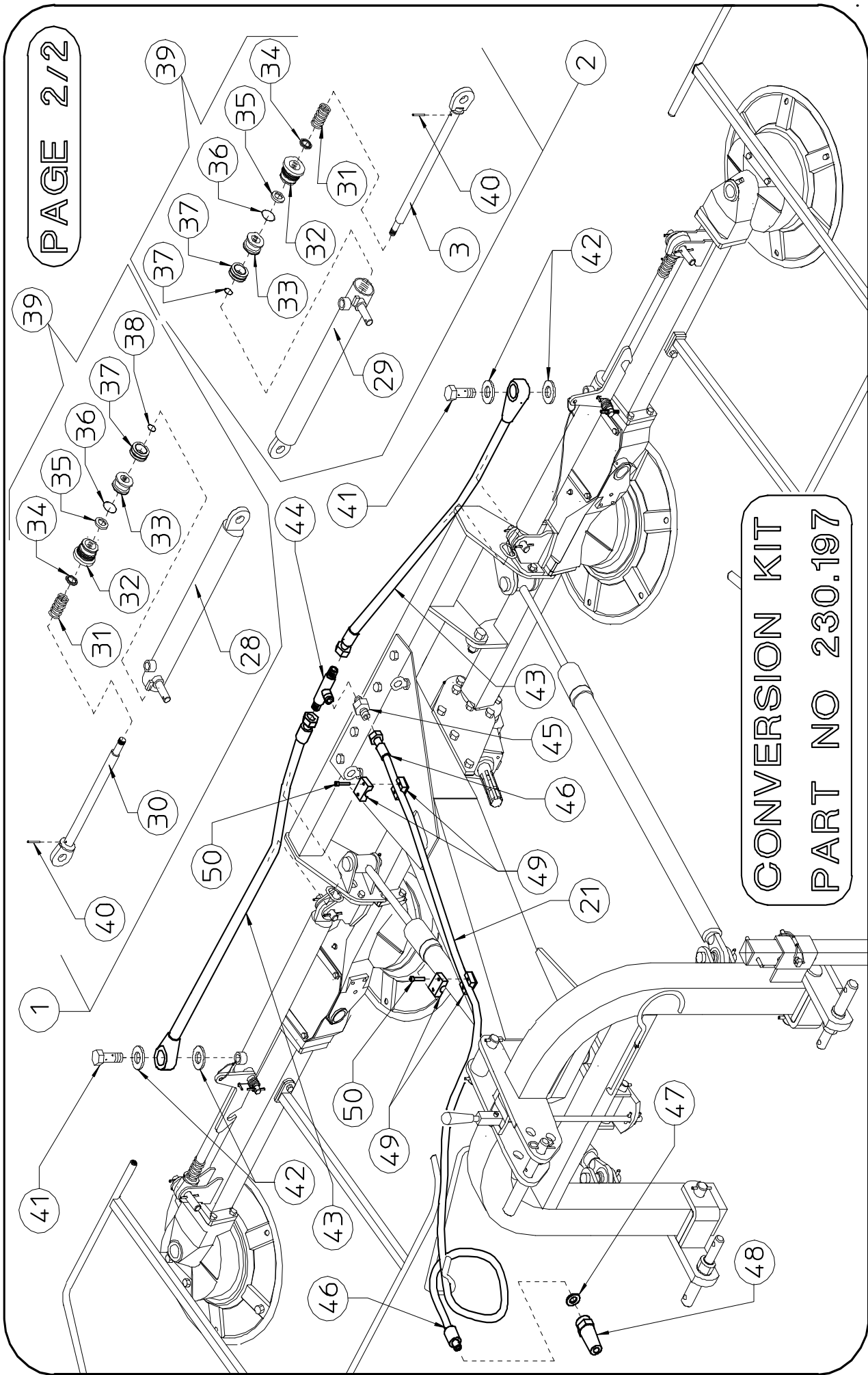
SPARE PARTS LIST

CONVERSION KIT
PART NO 230.197



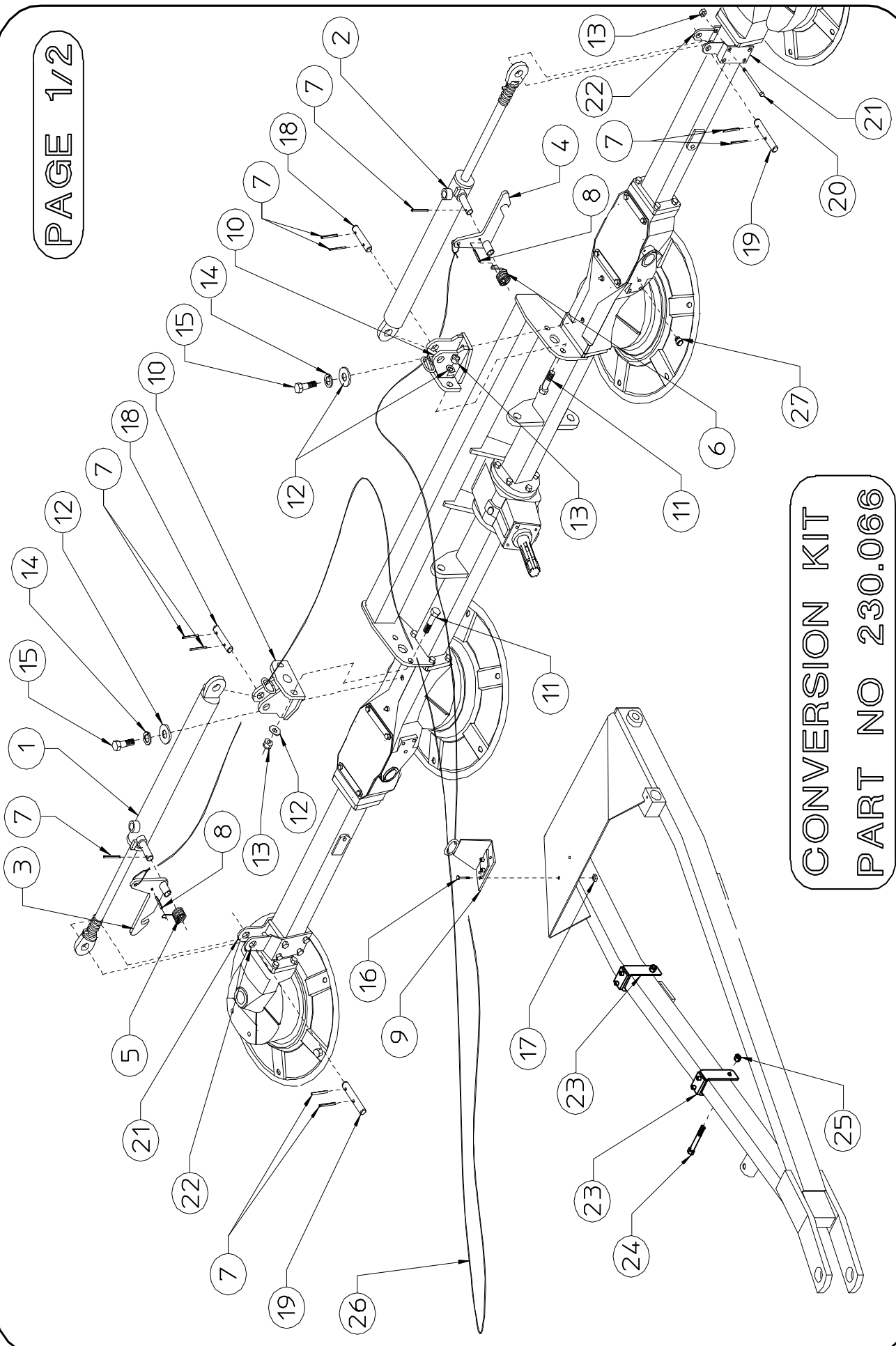
CONVERSION KIT PART NO 230.197 (PAGE 1/2)

ITEM	Q.ty	PART NO	DESCRIPTION	NOTE
1	1	220.822	RH CYLINDER	
2	1	220.823	LH CYLINDER	
3	1	210.098	RH COUPLER	
4	1	210.099	LH COUPLER	
5	1	210.093	RH SPRING	
6	1	210.094	LH SPRING	
7	10	600.538	SPRING PIN (ø6x35)	
8	2	600.773	SPRING PIN (ø6x30)	
9	1	230.198	SUPPORT	
10	2	220.825	HITCH	
11	4	600.616	SCREW (M12x35 5739-ZN)	
12	6	600.089	WASHER (ø13-ZN)	
13	14	600.077	NUT (M12 DIN 980)	
14	4	600.018	SPRING WASHER (ø13-ZN)	
15	2	600.441	SCREW (M12x25 5739-ZN)	
16	2	600.152	SCREW (M12x90)	
17	6	600.896	PLUG	
18	2	220.828	PIN	
19	2	210.103	PIN	
20	8	610.516	SCREW (M12x100)	
21	2	220.861	SUPPORT	
22	2	220.862	SUPPORT	
23	4	230.018	SHIM	
24	1	210.009	ROPE	
25	1	230.005	SUPPORT	
26	1	620.250	WASHER (ø11/30-ZN)	
27	1	600.006	SCREW (M10x25)	



CONVERSION KIT PART NO 230.197 (PAG. 2/2)

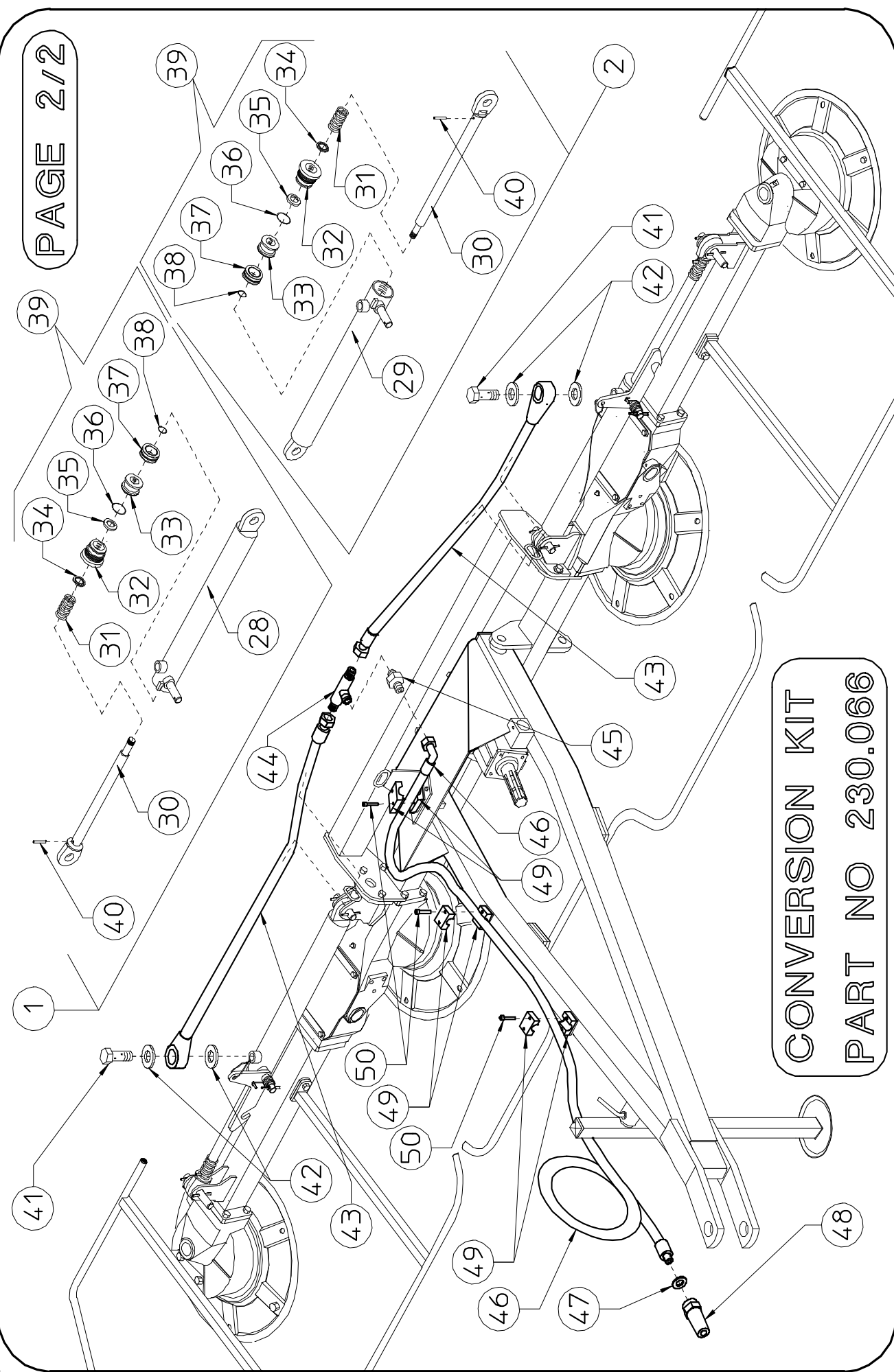
ITEM	Q.ty	PART NO	DESCRIPTION	NOTE
28	1	220.829	CYLINDER BARREL, RH	
29	1	220.830	CYLINDER BARREL, LH	
30	2	220.831	ROD	
31	2	200.947	SPRING	
32	2	210.288	CYLINDER HEAD	
33	2	210.289	PISTON	
34	2	610.025	GASKET	
35	2	610.027	GASKET	
36	2	610.026	GASKET	
37	2	610.028	GASKET	
38	2	610.029	GASKET	
39	2	600.895	SET OF GASKET	
40	2	600.106	SPRING PIN (ø3,5x18)	
41	2	600.820	FITTING (1/4")	
42	4	600.819	COPPER WASHER (ø1/4")	
43	2	620.321	HOSE (1/4")	
44	1	600.880	"T" ADAPTOR (1/4")	
45	1	600.883	NIPPLE (1/4"-3/8")	
46	1	620.323	HOSE (3/8")	
47	1	600.269	COPPER WASHER (ø1/2")	
48	1	600.273	QUICK COUPLER (1/2")	
49	4	610.035	HALF HOSE COLLAR	
50	4	610.037	SCREW (M6x25 5931-ZN)	



CONVERSION KIT
PART NO 230.066

CONVERSION KIT PART NO 230.066 (PAGE 1/2)

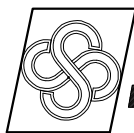
ITEM	Q.ty	PART NO	DESCRIPTION	NOTE
1	1	220.822	RH CYLINDER	
2	1	220.823	LH CYLINDER	
3	1	210.098	RH COUPLER	
4	1	210.099	LH COUPLER	
5	1	210.093	RH SPRING	
6	1	210.094	LH SPRING	
7	10	600.538	SPRING PIN (ø6x35)	
8	2	600.773	SPRING PIN (ø6x30)	
9	1	220.826	SUPPORT	
10	2	220.825	HITCH	
11	4	600.616	SCREW (M12x35 5739-ZN)	
12	6	600.089	WASHER (ø13-ZN)	
13	12	600.077	NUT (M12 DIN 980)	
14	2	600.018	SPRING WASHER (ø13-ZN)	
15	2	600.441	SCREW (M12x25 5739-ZN)	
16	2	620.278	SCREW (M6x16 5739-ZN)	
17	2	600.472	NUT (M6 DIN 980)	
18	2	220.828	PIN	
19	2	210.103	PIN	
20	8	610.516	SCREW (M12x100)	
21	2	220.861	SUPPORT	
22	2	220.862	SUPPORT	
23	2	220.827	SUPPORT	
24	2	600.528	SCREW (M10x65)	
25	2	600.029	NUT (M10 DIN 980)	
26	1	210.009	ROPE	
27	6	600.896	PLUG	



CONVERSION KIT
PART NO 230.066

CONVERSION KIT PART NO 230.066 (PAG. 2/2)

ITEM	Q.ty	PART NO	DESCRIPTION	NOTE
28	1	220.829	CYLINDER BARREL, RH	
29	1	220.830	CYLINDER BARREL, LH	
30	2	220.831	ROD	
31	2	200.947	SPRING	
32	2	210.288	CYLINDER HEAD	
33	2	210.289	PISTON	
34	2	610.025	GASKET	
35	2	610.027	GASKET	
36	2	610.026	GASKET	
37	2	610.028	GASKET	
38	2	610.029	GASKET	
39	2	600.895	SET OF GASKET	
40	2	600.106	SPRING PIN (ø3,5x18)	
41	2	600.820	FITTING (1/4")	
42	4	600.819	COPPER WASHER (ø1/4")	
43	2	620.239	HOSE (1/4")	
44	1	600.880	"T" ADAPTOR (1/4")	
45	1	600.883	NIPPLE (1/4"-3/8")	
46	1	620.240	HOSE (3/8")	
47	1	600.269	COPPER WASHER (ø1/2")	
48	1	600.273	QUICK COUPLER (1/2")	
49	6	610.035	HALF HOSE COLLAR	
50	6	610.037	SCREW (M6x25 5931-ZN)	



AGRICULTURAL MACHINERY
sitrex® SpA .

Zona Industriale-Viale Grecia, 8
06018 TRESTINA-(Perugia)-ITALY
Tel. +39.075.8540021-Telefax +39.075.8540523
e-mail: sitrex@sitrex.it www.sitrex.com

